

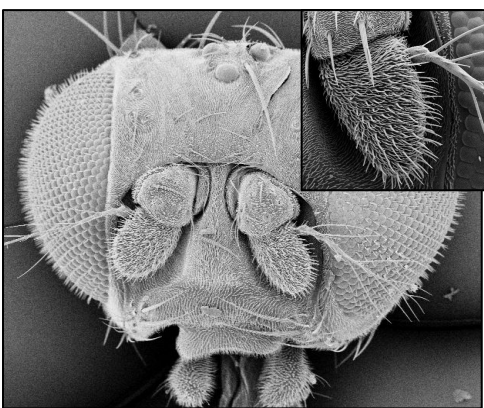


ICE 23

Save the date!

PhD course in Insect Chemical Ecology Alnarp, Sweden 5-16 June, 2023

In collaboration with Max Planck, Germany, icipe, Kenya
and Penn State University, USA



Impact of semiochemicals on insect behavior

With special focus on: plant-plant, plant-insect and plant-insect-microbe interactions, insects and diseases, pheromones, olfactory receptors, odor processing, evolution, physiological and chemical methods, new and upcoming applications.

. More information about schedule, lodging, fees, etc, coming soon!

. Students can already (pre)reserve a spot by mailing us.

For further information contact:

Sebastian Larsson-Herrera (sebastian.larsson.herrera@slu.se),

Guillermo Rehermann (guillermo.rehermann@slu.se)