



# Plant-based Proteins for Health and Wellbeing

*[www.oru.se/pansweden](http://www.oru.se/pansweden)*

# Many challenges regarding sustainability and health involve food and nutrition

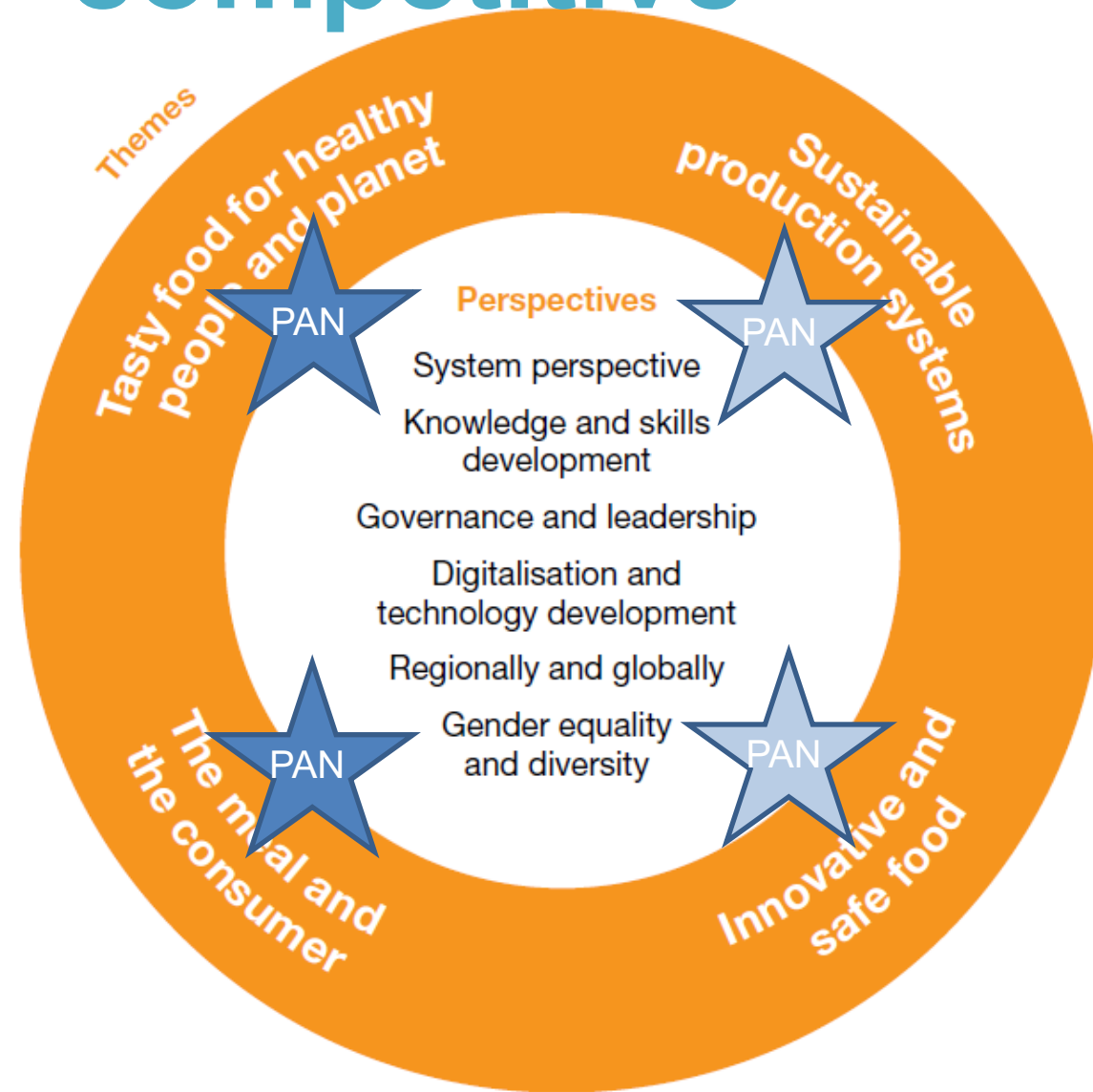




Our vision: *Sustainable-produced food with health benefits is the consumers' preferred choice*

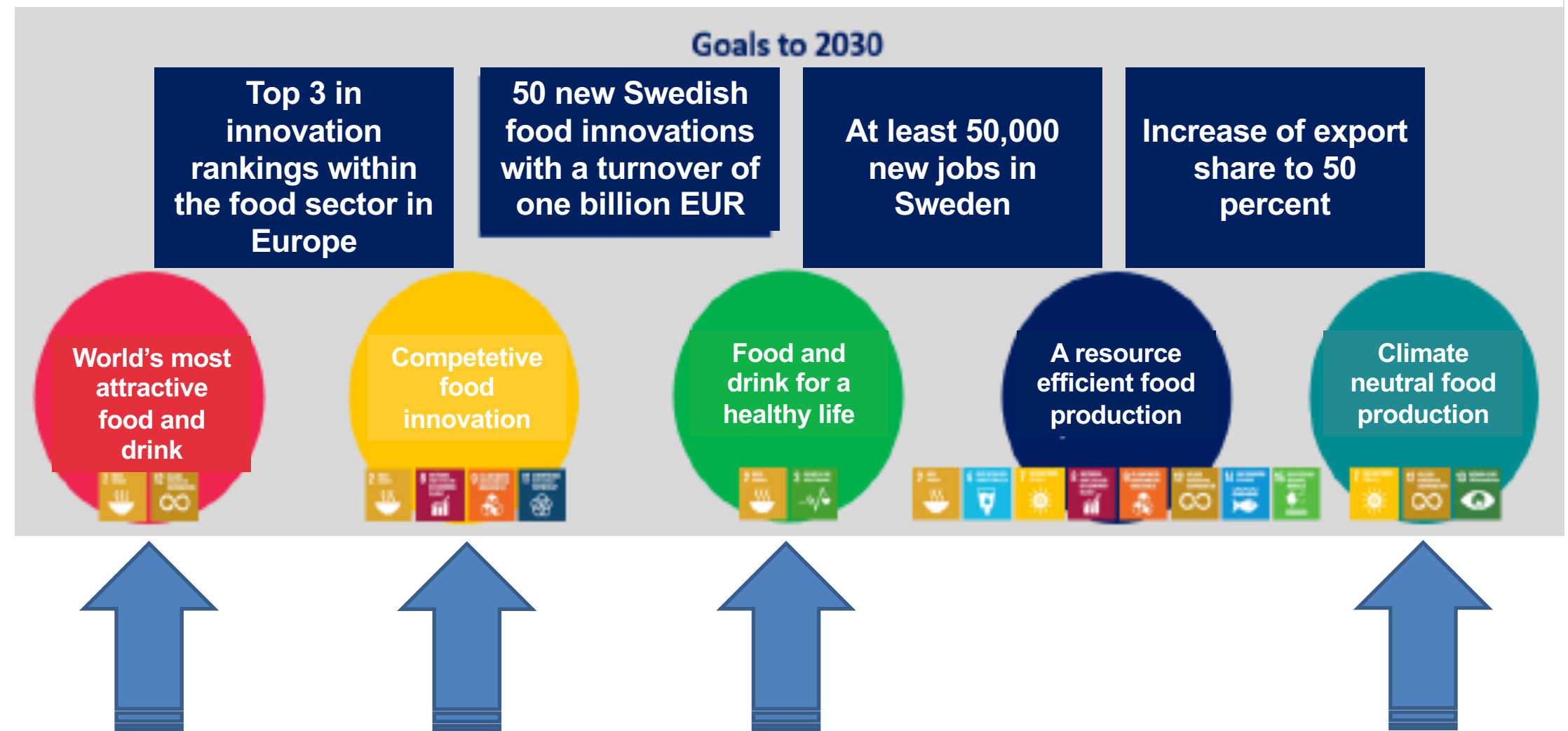


# Sweden needs more innovative power in the food sector to meet these challenges and to become more competitive



National research agenda towards a sustainable and competitive food system

## Sweden Food Arena Innovation and research agenda





# Not so long ago....



## Beredningsgruppens yttrande

2020-02843 Robert Brummer Beredningsgrupp: Brg2054

**Utlisningsnamn:** Centrumbildningar för hållbarhet och konkurrenskraft i livsmedelssystemet 2020 **Bidragsform:** Stöd till forskningsmiljö  
**Projekttitel (svenska):** Växtbaserade proteiner för hälsa och välmående (PAN Sverige) **Sökt inriktning:** Nationella forskningsprogrammet för Livsmedel

<b>Relevans</b>	<b>6</b>
<i>1 - Insufficient, 2 - Poor, 3 - Acceptable, 4 - Good, 5 - Very Good, 6 - Excellent, 7 - Outstanding</i>	
<b>Potential</b>	<b>6</b>
<i>1 - Insufficient, 2 - Poor, 3 - Acceptable, 4 - Good, 5 - Very Good, 6 - Excellent, 7 - Outstanding</i>	
<b>Genomförande</b>	<b>6</b>
<i>1 - Insufficient, 2 - Poor, 3 - Acceptable, 4 - Good, 5 - Very Good, 6 - Excellent, 7 - Outstanding</i>	
<b>Organisation/aktörer</b>	<b>6</b>
<i>1 - Insufficient, 2 - Poor, 3 - Acceptable, 4 - Good, 5 - Very Good, 6 - Excellent, 7 - Outstanding</i>	
<b>Slutbedömning</b>	<b>6</b>
<i>1 - Insufficient application, 2 - Poor application, 3 - Acceptable application, 4 - Good application, 5 - Very good application, 6 - Excellent application, 7 - Outstanding application</i>	



The proposed centre will make an excellent contribution to improved sustainability and public health in the context of future Swedish food production. The activities apply an excellent, integrated, and interdisciplinary approach to assess the issue of increased consumption of plant-based foods in the Swedish diet. The focus is on accelerating the positive environmental impacts of plant-based proteins, (e.g. through personalised nutrition), rather than simply reducing the negative impacts of livestock production systems. The potential impacts on physical and mental healthcare are assessed through rigorous and robust scientific methodologies. Food quality (sensory properties of foods, and consumer acceptance trials in restaurants and procurement contexts) are addressed, ensuring the needs of potentially more excluded groups of society are understood. The consortium has an extensive network established across universities, public and private sectors, and has embedded co-production (e.g. in relation to the "toolbox") within its activities. Research into understanding consumer decision-making in retail environments will be conducted through collaboration with stakeholders involved in the project, as will

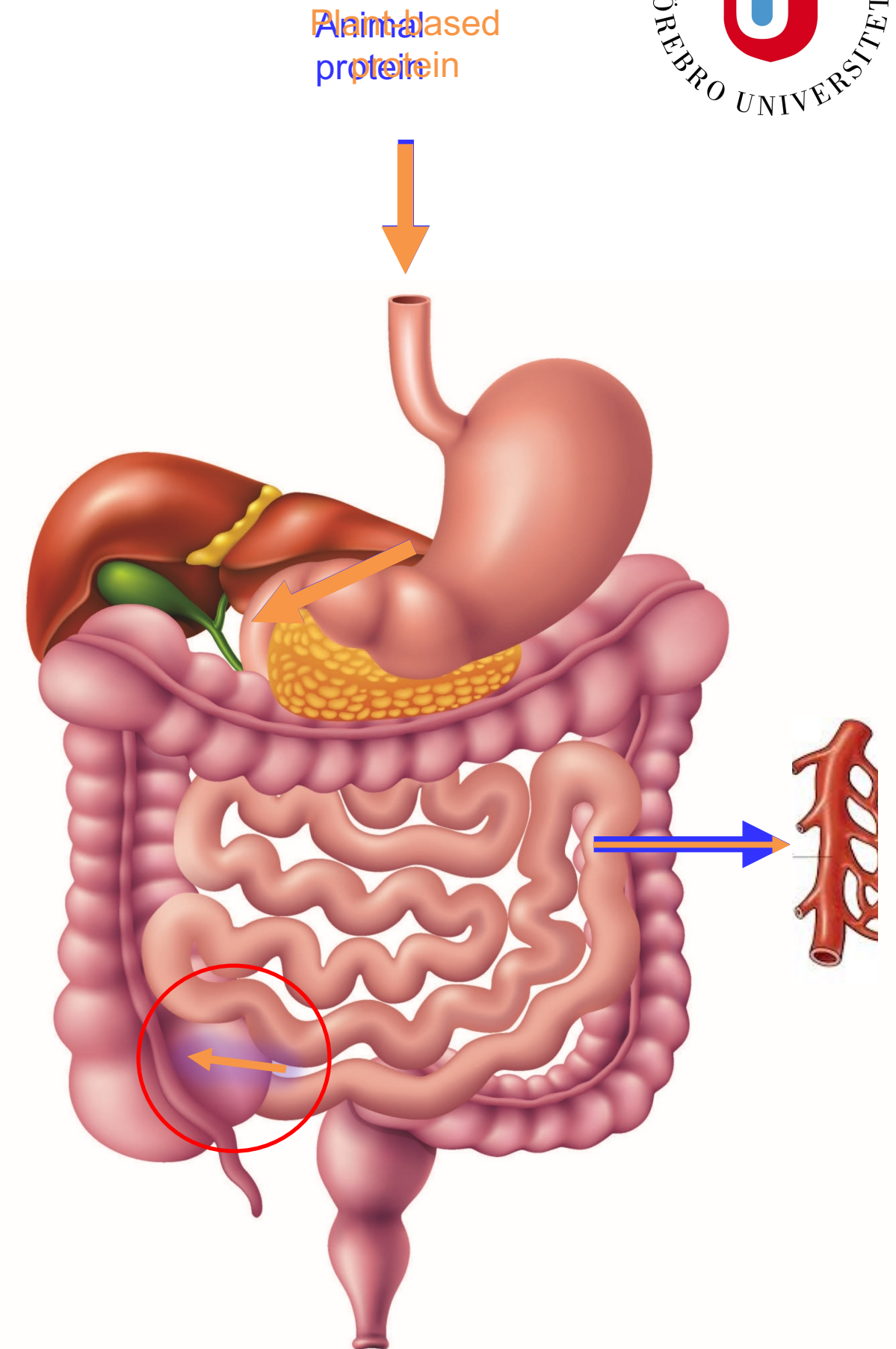


# *The challenge* PAN SWEDEN meets



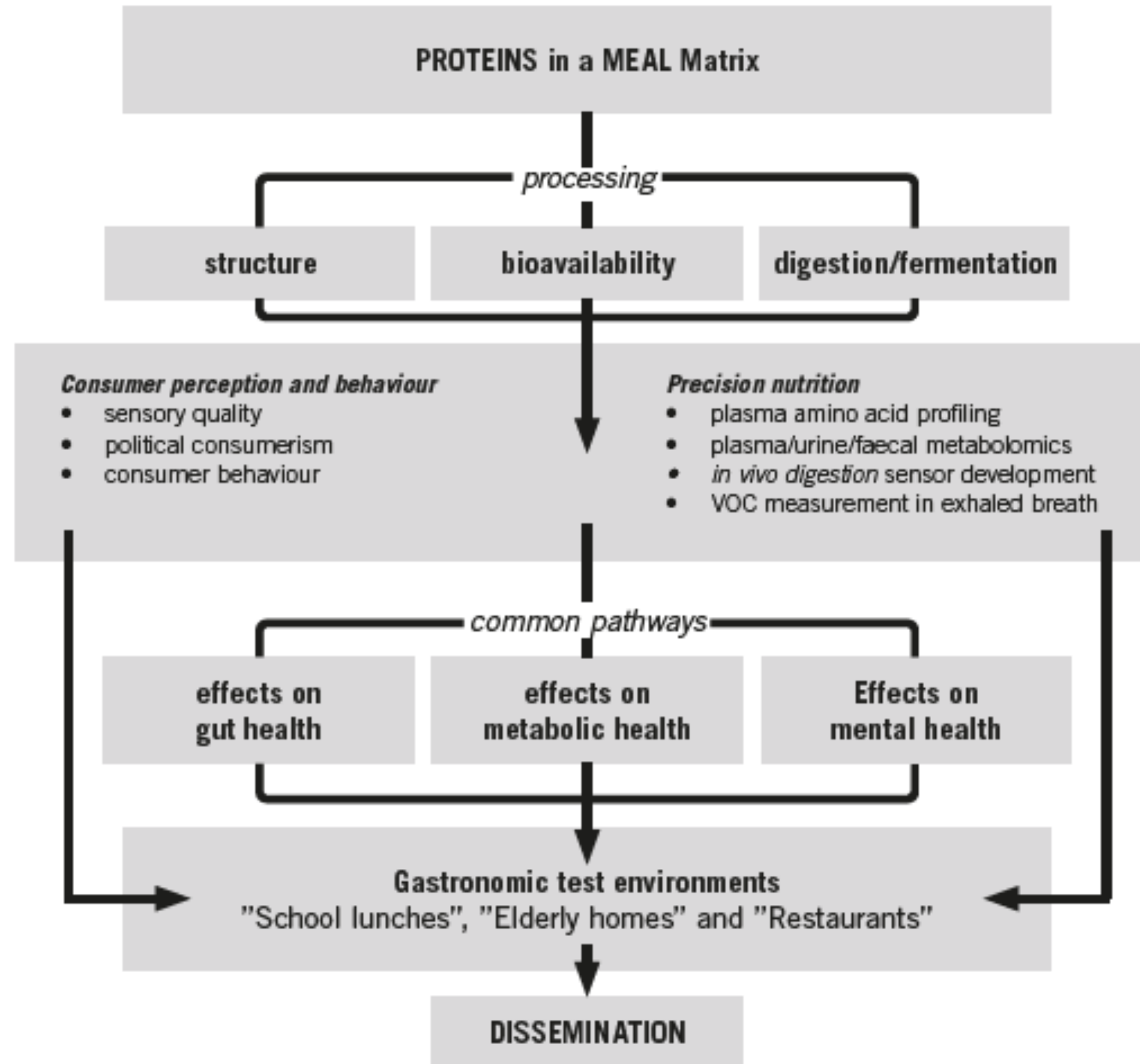
The different protein uptake and fermentation considerably affects health

Modification of plant-based proteins affects texture and taste.





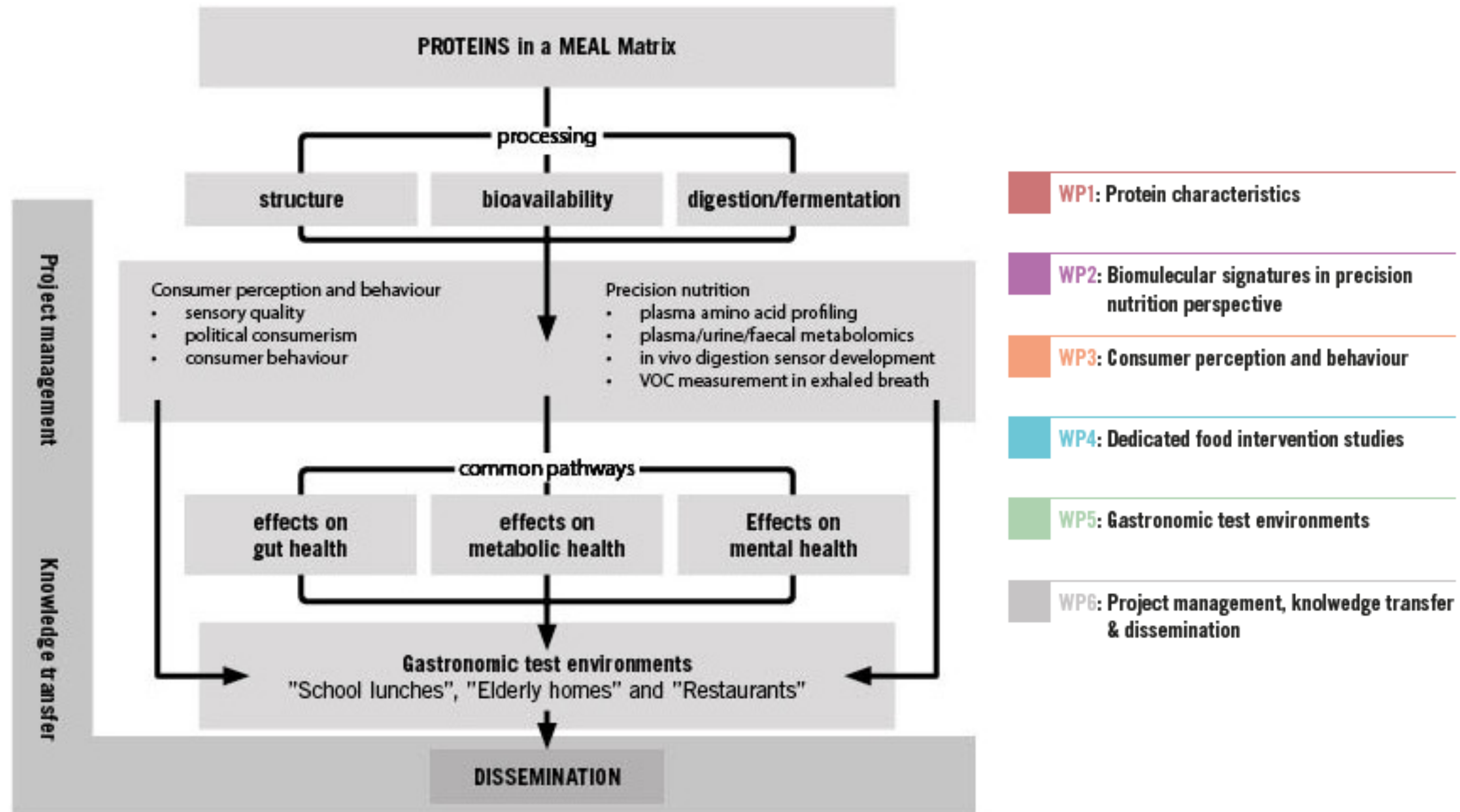
# How does PAN Sweden meet this challenge?



*Our conceptual design integrates food, nutritional and social sciences*

*Development and application of the toolbox enables a mix of pre- and competitive research*

# How does PAN Sweden meet this challenge?







# Achievements so far



## Current PAN Sweden partners



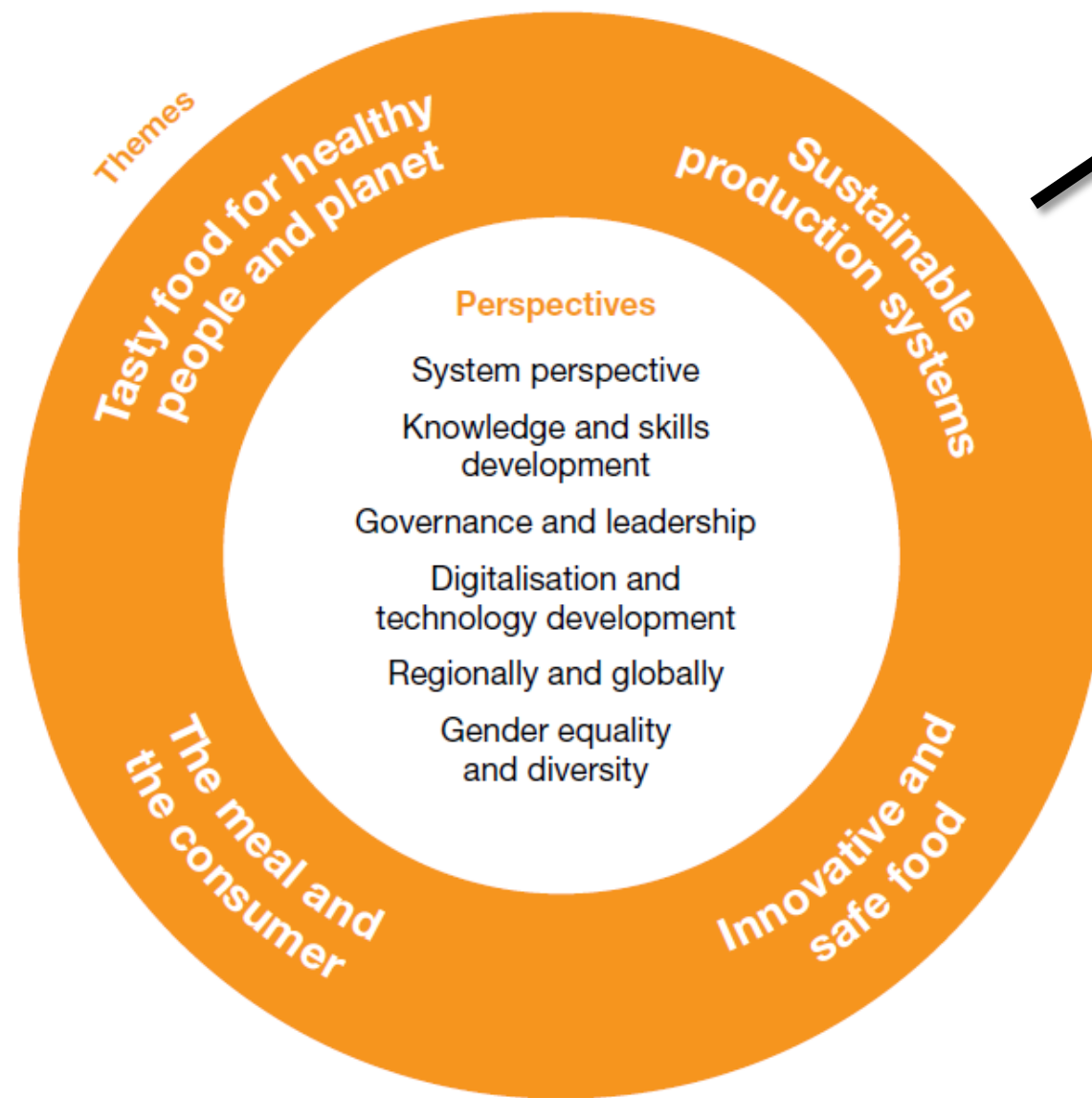
CHALMERS



- Progress in the WP's
- Recruitment of talented staff
- Positioning (inter)nationally /SFA
- Precision Nutrition Innovation Arena (PNI)
- Several external funding grants submitted and obtained
- Multiple questions/proposals from non-partners



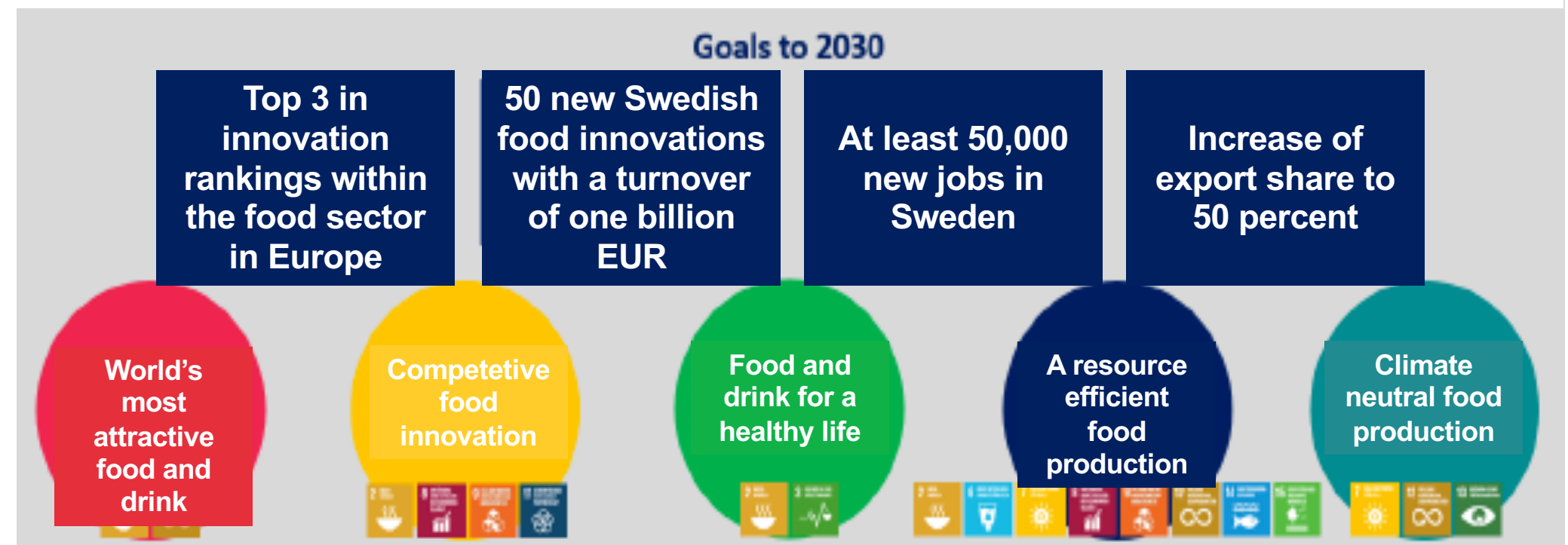
# PAN Sweden will contribute to the sustainability and competitiveness of the Swedish food system and addresses challenges of the Agenda 2030



**PAN SWEDEN**



*Sweden Food Arena Innovation and research agenda*



National research agenda towards a sustainable and competitive food system